

# Script-Driven Async Modem File Transfer for Windows PC's Featuring Xmodem, Kermit, Ymodem & Zmodem Protocols plus FTP.

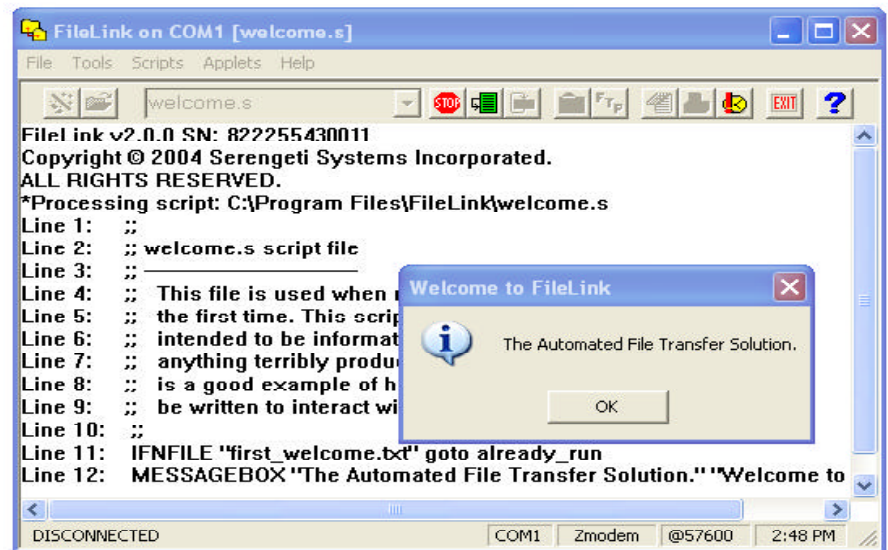


## FileLink Script Commands

ANSWER	GETNEXTFILE	NATO
APPEND	GOTO	MAKEDIR
ASK	IFERROR	PAUSE
AUTHDATA	IFFILE	PERFORM
AUTHPW	IFNFILE	PLAYSOUND
AUTHUSER	IFNO	PRINT
CALL	IFNSTRCMP	PROMPT
CHAIN	IFNSUBSTR	PROTOCOL
CONNECT	IFSTRCMP	RCVFILE
COPY	IFSUBSTR	READFILE
CREATEMAIL	IFYES	REMOTECMD
CRON	IMPORT	RENAME
DATEADD	INC	RESTORE
DATESUB	LINEIN	SENDFILE
DEC	LINEOUT	SENDMAIL
DELDIR	LISTDIR	SET
DELETE	LOG	SETLEFT
DIAL	LOGMSG	SETMID
DISCONNECT	LOGNTEVENT	SETRIGHT
DISPLAY	LOOPCOUNT	SPEAKER
EXEC	LOOPIF	STOP
EXIT	LOOPTO	TERMINAL
EXPORT	MAKEFILENAME	TRACELOG
FLUSH	MESSAGEBOX	TRACEWIN
FTPCLIENT	MINIMIZE	UNZIP
FTPCMD	MODEMCMD	USEPORT
FTLOGOFF	MODEMDEFAULTS	WAITSIG
FTPLOGON	MODEMDETECT	WORKINGDIR
GETMAIL	MODEMRESET	WRITEFILE
GETHOSTFILE	MOVE	ZIP

# FileLink®

## The Automated File Transfer Solution



### Introduction

FileLink brings the power of mainframe-oriented, batch file transfers to the world of asynchronous modem and Internet FTP communications. Based on Serengeti's renowned IBM mainframe data terminal emulators, FileLink provides an extensive script language for controlling file transfers.

By providing automated, unattended operation, FileLink can be set up to send and receive files at any time. For example, FileLink's script language can place a call through your modem, recognize and send character strings (such as logon and password strings), send and/or receive text and binary files using a variety of file transfer protocols, and recover from errors.

FileLink maintains a detailed log file to record the events of a file transfer session. Each log file entry is stamped with the system date and time and records the step-by-step activity of a session for later review. Each log entry is immediately written to the log file so it is always up to date.

### Application Integration

FileLink application integration features are

extensive. Among other features, FileLink offers a COM/OLE interface permitting complete control from a user-written program. These features permit FileLink to be tightly integrated with user-written application programs.

### Built-In TTY and FTP Applets

Although FileLink's design is centered around the execution of script files, it also includes simple but capable TTY terminal emulator and FTP client applets. These applets can be invaluable tools for the creation of FileLink script files. An applet may be used interactively to determine the operation of a remote system in order to build a script file to mimic the steps that may otherwise be required by an operator.

### Summary

FileLink has been designed from the ground up as an unattended file transfer package. Many other popular asynchronous and FTP communications packages designed for attended operation are excellent if you are there to "drive", but often come up short if your needs call for unattended operation. For those times, there is FileLink – the automated file transfer solution.

## General Features

- Powerful script language for unattended operation
- Support for popular file transfer protocols including FTP, Xmodem, Kermit, Ymodem, and Zmodem
- Direct Notepad (or other) access for script file editing
- Auto-dial & auto-answer with Hayes-compatible modems
- Direct connection for modem-less connections
- Up to 56K bps over dial-up lines; up to 115.2K bps for direct connections
- TCP/IP network connection for Internet FTP transfers
- "Hot send" feature for automatic file transmission
- Automatic naming of received files
- Terminal applet for interactive TTY sessions
- FTP client applet for interactive FTP file transfers
- COM/OLE automation for control from user application (complete Visual Basic and Visual C++ samples provided)
- Complete session log with date and time stamps
- Built-in diagnostic message logging and debugging window
- More than two simultaneous sessions from a single system (with FileLink XE)
- Configurable for COM1 through COM9 (COM1 through COM48 with FileLink XE)

## Script Language Features

- Execute scripts from the command line, batch files, parent processes, or the FileLink menu
- Execute external processes and evaluate results
- Command line parameter substitution
- Call scripts from within scripts
- Send and receive e-mail messages
- Advanced event scheduling commands
- Branching and looping commands
- Extensive result codes and error testing
- String and numeric variables
- String and sub-string manipulation
- Commands for interactive prompting and messaging
- Zip and unzip commands

## Async File Transfer Features

- ASCII mode for simple, unblocked transmission and reception of text files
- Kermit, Xmodem, Xmodem1K, Ymodem, and Zmodem protocols for blocked, error-correcting transmission and reception of text and binary files
- Override control on remotely named files being received
- Compression control and 7- or 8-bit data path (Kermit)
- Both 128 and 1K block size; configurable CRC or LRC block check methods (Xmodem and Xmodem1K)
- Configurable ACK control (referred to as the G-option for the Xmodem1K and Ymodem protocols)
- File "over-write" control and crash recovery (Zmodem)

### **RISK-FREE GUARANTEE!**

If you are not completely satisfied with any Serengeti product, return it within 30 days of purchase for a refund of your purchase price.

Copyright © 2004 Serengeti Systems Incorporated. All Rights Reserved. Specifications are subject to change without notice. FileLink is a registered trademark of Serengeti Systems Incorporated. Other trademarks and tradenames are the property of their respective owners.

FileLink.p65 (04/26/04)

## FTP File Transfer Features

- Support for connection through proxy servers
- Support for both active and passive mode transfers
- Resume broken (or incomplete) transfers
- Save files locally with same date/time stamp as the server
- Maintain a server connection even if idle for long periods of time
- ASCII, binary, EBCDIC file transfer modes
- For compatibility with Unix servers, support renaming space-embedded file names when sending (spaces are converted to underscores), and case conversion (to all upper or all lower case characters)
- Fully definable ASCII-EBCDIC translation tables
- Support for direct access to JES queues on IBM mainframe servers
- Send most "raw" FTP commands and interpret the response

## FileLink Terminal and FTP Client Applets

FileLink features built-in TTY terminal emulator and FTP client applets. These applets may be invoked with a click of the mouse or by way of a script command. While the applets may be used as either a general purpose TTY terminal or FTP client, they are primarily intended as tools for the FileLink script file developer. These applets may be used to understand and manually perform the steps ultimately to be performed by a script file.

## FileLink XE - The Extended Version of FileLink

FileLink XE includes all of the features of FileLink but allows a maximum of up to 48 simultaneous file transfer sessions. FileLink is limited to two simultaneous sessions. Otherwise all references to FileLink in this data sheet also apply to FileLink XE unless otherwise specifically stated.

## Pricing

The list prices for FileLink and FileLink XE are:

FileLink	\$195
FileLink XE	\$795

Quantity discounts are available. OEM inquiries welcomed.

# For more information call (800) 634-3122 today!

## Serengeti Systems Incorporated

812 West 11th Street  
Austin, TX 78701-2022

Voice: (512) 345-2211  
Fax: (512) 480-8729  
E-mail: [sales@serengeti.com](mailto:sales@serengeti.com)  
WWW: <http://www.serengeti.com>



